

The Creeping St. Mary Newsletter



in St. Mary's Church, stained glass by Brian Thomas, 1950,
depicting the Adoration of the Shepherds.

Volume 41/6 December 2022 January 2023



**HOUNSFIELD
BOILERS**



Domestic Oil-Fired Boilers

Made in Needham Market

Short listed for a prominent national award.



The H & V News Awards, is a show case for the very best products within the heating industry.



Tel.: 01449 722461
www.hounsfieldboilers.co.uk



Editorial Comment

When looking for a suitable photo to adorn the Christmas edition I was embarrassed to discover that, in my ignorance, I had not realised that the Christmas story is displayed in glorious technicolour in our Church. The stained glass by the more modern Thomas and Victorian Kempe and is of national importance - so please go and see for yourself.

Entering a church whether as a believer or not you can't help but feel the significance of history and the story it tells - there are not many places you can go and feel the connection with the past - certainly not walking down a supermarket aisle - the modern approximation to a temple - but to the worship of consumerism and infatuation with cheapness. Our MP explains the importance to ourselves and the environment of our well-regulated farming systems and that, at our peril, we reject the crops they produce in favour of cheaper, unregulated ones. This results, as Rev Phillip points out, in unexpected environmental consequences - like, for some, biblical flooding - easy to ignore and dismiss here when we have just come out of a drought. However, if the way to combat the worst effects of our actions on the environment, this village excels by promoting the benefits of localness - providing a wide range of activities - including entertainment, assistance and support all on a voluntary basis, in the village, without having to travel far or even get into a car - one of the villains of the piece.

Thanks go to all who contribute to and distribute this publication, keeping the village informed of all the various goings-on.

Joan Hardingham (co-Editor with Kathryn Martin)

UP-COMING VILLAGE EVENTS

n.b. always check with individual organisation for changes

Mobile Library - 23rd December. 20th January 2023

Creeping St Mary Church services and other events - see pp 16 & 18

Social Club, Village Hall

Soup lunch 12pm Tues 13th December (*please note change of date*)

Friday bar - none in December; last Friday in January

Christmas Childrens' Party Saturday 17 December 2 p.m. (*fully booked*)

1980's fancy dress evening - Friday 23 December - with live music

Village School - Christmas Fayre - Saturday December 3rd

Wreath Making Village Hall Monday 12th December 2-4pm

Lilley's Wood Work Parties December 10th and 16th from around 1pm until dusk. January times to be arranged.



CLARKE
FENCING LTD
TEL 01449 614939

For the best Fencing Products in East Anglia, why not come and visit our new premises:

Unit 3, Stowmarket Business Park, Ernest Nunn Road, Stowmarket, IP14 2ED

Not only have we expanded our premises but we have also expanded our product range:

Closeboard, Larch Lap, European Decorative Panels, Trellis, Post and Rails, Gates.

Sheds, Dog Kennels, Summer Houses and Children's Play Houses.

Electric Fencing for Horses and Cattle as well as Stock Fencing.

Decking, Planters, Picnic Tables, Sleepers.

Ironmongery, Wire Netting, Chainlink, Ronseal Preservatives, Tools.

Cement and Ballast, Ply Wood, Protective Clothing.

** Free No Obligation Quotations * ~ ~ * We Supply & Fit to Trade and Public **

Email: info@clarkefencing.co.uk

www.clarkefencingltd.co.uk

E&D Boiler
Maintenance Ltd



LOCAL, PROFESSIONAL, ESTABLISHED SPECIALISTS IN

Oil, Gas & LPG

Servicing, Breakdowns, Repairs and Installations

All makes covered including:

Grant, Worcester Bosch, Boulter Camray, HRM Wallstar, Vaillant, Baxi.



Telephone
01379 898574



Upper Church Farm, Finningham Road, Rickinghall, Suffolk, IP22 1LP

www.boilerrepairsuffolk.co.uk

CREETING ST MARY PARISH COUNCIL NEWS

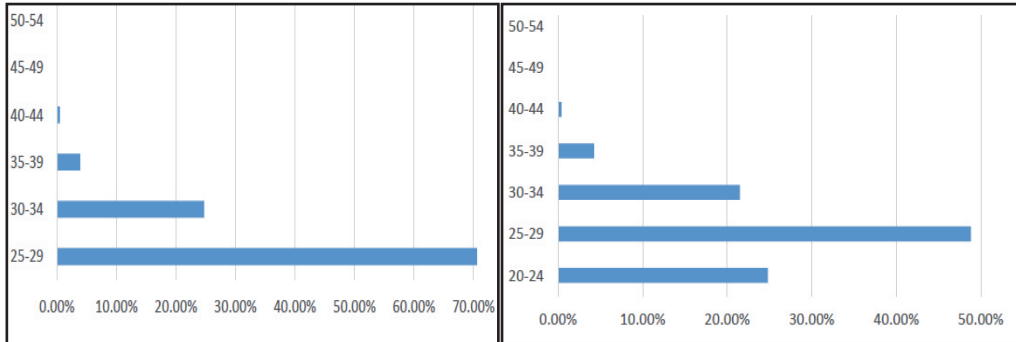
Speed Data

The data from our two Speed Indicator Devices (SIDs) is collected every two months and the data fed into a chart.

Speed Data for September and October 2022

All Saints Road 12,836 occurrences

Jacks Green Road 27,473 occurrences



Dog Bin

The Parish Council will be providing a new dog bin to Creeting Hills following reports of many discarded dog poo bags. It is hoped that the new bin will encourage people walking their dogs in that area to dispose of their dog mess appropriately.

Pathway from All Saints Road to Blacksmiths Field

You may have noticed that the tarmac pathway from All Saints Road to Blacksmiths Field has cracked in various places. The Parish Council have liaised with DAB Construction, who installed it, and they will be rectifying the issue in due course by changing the surface to that of self-binding gravel. It is hoped that the new surface will be more appropriate and give the pathway room to 'move' in extreme weather conditions and also takes into account the roots from nearby trees and hedgerows.

Village Hall Car Park

The Parish Council are currently looking into resurfacing the front car park at the village hall. Currently, gravel finds its way onto the road, which we wish to rectify.

Planning Applications Considered

Ref: DC/22/04777 - Full Planning Application - Conversion and extension of stable buildings to form 1no. dwelling - Creeting Hills Farm, Creeting Hills, Creeting St Mary – No Objections

Recent Planning Application Decisions

Ref: DC/22/02832 - Full Planning Application - Erection of barn for storage of machinery and land maintenance equipment - All Saints Barn, Low Lane, Creeting St Mary – Granted

Ref: DC/22/03644 - Householder Application - Erection of a double cart lodge, with office/storage/playroom space above - 68 All Saints Road, Creeting St Mary – Granted



Andrew Bingham

INDEPENDENT FUNERAL SERVICE

Local Caring Independent Funeral Service

24 Hour Personal Service

Qualified

Experienced

www.andrewbingham.co.uk

01449 771666

The Nutshell, Milton Road South, Stowmarket, IP14 1EZ



Golden Charter
Funeral Plans



You Grow It, I'll Mow It!

Grass Mowing
Hedge Trimming
Strimming
Turfing
Fencing



Call Nigel (01449) 721025

CHIMNEY SWEEP

ECO SWEEP
CHIMNEY SERVICES

- NEW POWER SWEEPING METHOD USED FOR A MORE THOROUGH CHIMNEY CLEAN THAN BRUSHES.
- INDUSTRIAL HEPA FILTERED VACUUM.
- FULLY INSURED.
- INSURANCE RECOGNIZED CERTIFICATES ISSUED.
- SPOTLESS, RELIABLE AND FRIENDLY SERVICE.
- ALL CHIMNEYS, WOOD BURNERS, AGA, BOILER FLUES SWEEP.
- GUILD OF MASTER SWEEPS CERTIFICATED MEMBER.



TEL. 01359 232335

Page 6 December 2022 January 2023

Ref: DC/21/04898 - Full Planning Permission - Erection of 1No dwelling with garage and associated works to include alterations to landscaping (following demolition of existing buildings) - Land North of Lyndale Lodge, All Saints Road, Creeting St. Mary – Granted

Ref: DC/22/03428 - Application for approval of Reserved Matters following Outline Planning Permission DC/19/01566 (Allowed under Appeal Ref: APP/W3520/W/19/3232511) dated: 13/11/2019 - Access, Appearance, Landscaping, Layout and Scale for Erection of 1no. detached dwelling with garage and new vehicular access - Land Adjacent to Whiston, All Saints Road, Creeting St Mary - Approved

Jennie Blackburn, Parish Clerk

Details of forthcoming meetings and copies of Parish Council Meeting minutes can be found on the village web-site. If you have any concerns or queries to address to the Parish Council, please contact Jennie Blackburn, Parish Clerk by e-mail @ clerk@csmipc.co.uk or phone 01449 721369 (answer phone) or come along in person to the next meeting.

MID SUFFOLK DISTRICT COUNCIL REPORT TO CREETING ST MARY PARISH COUNCIL 20TH OCTOBER 2022

The death of Her Majesty the Queen. Thank you to all our towns and parishes who helped residents to pay tribute to Her Majesty the Queen and send condolences to the Royal family. We recognise the effort behind the scenes in supporting our communities across our districts. Condolences to the Royal family from our councils.

Councils set out parking strategy for the next 20 years. Supporting the needs of local trade and residents, while putting the brakes on climate change – Babergh and Mid Suffolk District Councils have set out their plans for improved parking provision for the next 20 years.

Latest CIL funding sees thousands ploughed back into communities. More than £420,000 in developer contributions is to be ploughed back into communities – funding a study into Thurston railway station and improved play equipment and bus facilities for villages.

A chance to stand for what you believe in. Residents across Babergh and Mid Suffolk are being encouraged to consider adding their name to the ballot and stand as a district councillor next May.

What's Next for Stowmarket?. Almost 350 residents, businesses and community groups attended the John Peel Centre for our public exhibition to find out more about major projects underway in Stowmarket. The event was coordinated by the Stowmarket Vision Group which includes Mid Suffolk District Council, alongside partners including Stowmarket Town Council, the John Peel Centre, Old Fox Yard, the National Food Museum and others. Find out more about the projects on our websites.

Households urged to get Food Savvy and plan ahead to save money and avoid waste. As the cost of living continues to bite a new campaign has been launched in Suffolk to help families reduce food waste and save money. More information is available on our websites.

GUDGEONS PRENTICE

SOLICITORS

TELEPHONE: (01449) 613101 | EMAIL: info@gudgeons-prentice.co.uk

BUTTERMARKET | STOWMARKET | SUFFOLK | IP14 1ED

www.gudgeons-prentice.co.uk

GUDGEONS PRENTICE are local solicitors and specialist in:-

Wills and Probate

Powers of Attorney

Residential Conveyancing and Commercial Property

Landlord and Tenant

Divorce, Financial Matters, Separation, Child Welfare and Other Family and

Matrimonial Matters

GDC Build

· Extensions · Outbuildings · Alterations and
Refurbishments · Landscaping · Fencing · Roofs
and Roofline Installations · Kitchens · Bathrooms
· General Maintenance and repairs

Tel: 07833 718 548 Email: gdcbuild19@gmail.com

www.gdcbuild19.com

Lion Barn House, Lion Lane, Needham Market, IP6 8NT

**Mid Suffolk District Councillors Mike Norris mike.norris@midsuffolk.gov.uk
Tel. 01449 720871 and Steve Phillips stephen.phillips@midsuffolk.gov.uk
Tel. 01449 721710. Representing Needham Market, Badley, Baylham,
Creting St Mary, Creting St Peter, and Darmsden.**

November 2022 report for the Thredling Division from Cllr Matthew Hicks Cost of living to impact council's budget

SCC is keen to hear from Suffolk residents, businesses and local communities, as it decides its budget for next year. An online survey has been launched, and a number of focus groups will be held, for you to have your say on the services which are important to you. A summary of your responses will be included in the report considered by the council when agreeing the budget in February 2023. The budget setting process includes your thoughts, advice from council officers, elected members from political groups, businesses and partners in health and other public service organisations across Suffolk. Setting our budget is always challenging but this year is going to be much more difficult. Many of the pressures households are facing, we are facing too: the high rates of inflation and the effects of the pandemic, and there are more to see more demand for our services, and a balance must be sought. The Council can seek to increase the money it receives from Government, and its share of council tax bills. With careful financial planning and management, the council has saved hundreds of millions of pounds through programs making the organisation leaner, whilst still protecting many services from large-scale reductions. It committed £12.8m to the decarbonisation of its estate; one of the council's main buildings has seen a reduction in gas consumption by 84%, meaning financial and carbon savings. The online survey is open throughout October and November, and focus groups are being organised with local community groups and for members of the public. Details of these will be shared in due course. For more info: www.suffolk.gov.uk/council-and-democracy/budget-council-tax-and-finance/the-budget-for-suffolk/.

Special educational needs and disabilities (SEND)

The Council's Cabinet agreed new funding of £3 million to continue its programme to provide places with SEND in Suffolk. This is Phase 3 of the Capital Programme to create three additional specialist units providing 42 additional places. Phase 1 created 825 and Phase 2, signed off in June 2022, and will create up to 73 new places at a cost of £45million, £15million of which has been provided by the Department for Education. In addition, Cabinet also agreed to support the Department for Education's High Needs Provision Capital Funding (HNPCF) for 2023/24 of £7million to be spent on the development of units attached to mainstream schools to support students with social, emotional and mental health problems and speech, language and communication needs. This will create up to 168 new spaces, and in addition to previous funding agreed from the Department for Education in 2022/23 for up to 78 new places. Cabinet supported the application for funding for two free schools from the Department for Education. One of these will be in east Suffolk and support children with severe learning



FARM SHOP BUTCHERY DELI

COURTYARD CAFE, POTTERY & GIFTS, VINTAGE AND ANTIQUES

Christmas orders by Dec 12th including local hams and turkeys
order forms available from the farm shop.

Farm shop open 9-5 till 2pm - Xmas Eve

29th, 30th, 31st December 10-4.00

from 3rd January 9 - 4.30 Mon - Sat, Sun 10-4.00

February Mon - Sat 9 - 5, Sun 10-4.00

Cafe open daily 9.30 - 4.30 closing 2pm Xmas Eve;

closed for refurbishment till 12th January

JOIN the CAFE MONTHLY FRIDAY SUPPER CLUBS

2 in December - 2nd and 16th

Jan 27th Burns Night

Delicious local, seasonal and artisan foods

Fruit and vegetables

our own multi-award winning ice cream

Freshly baked bread from Woosters Bakery and

Palmers of Haughley

local and speciality cheeses in the Deli

freshly baked sausage rolls

Vegetarian, gluten-free & vegan ranges

Cook's ready meals & frozen veg & pastries

All kinds of sweet and savoury delights

Eco cleaning & toiletries & refills

Plants from Katie's Garden, pots & locally-produced compost

Play area & Woodland Walk

www.aldercarrfarm.co.uk 01449 720820

[farmshop@](mailto:farmshop@aldercarrfarm.co.uk) or [cafe@](mailto:cafe@aldercarrfarm.co.uk) or orders@aldercarrfarm.co.uk

difficulties and the second will be built in Sudbury for those with autistic spectrum disorder and complex social, emotional and mental health problems. If the bids are successful, both schools will teach children and young people from across Suffolk. In total, Suffolk will deliver up to 1,317 new places for children and young people with SEND by 2025/26. The next step for Phase 3 is for schools to express an interest in having a specialist unit and the most suitable sites will be chosen. New special schools opened in Suffolk include Castle EAST, a communication and interaction school in north Suffolk; a social, emotional and mental health school in west Suffolk named Sir Peter Hall; and a communication and interaction school in south Suffolk, Woodbridge Road Academy.

Campaign to boost metal packaging recycling rates across Suffolk

A new initiative encouraging households to recycle metal packaging was rolled out by the Suffolk Waste Partnership through the 'MetalMatters' campaign. This targeted more than 350,000 households in October and November. The Suffolk Waste Partnership is proud to support MetalMatters, which is run by Alupro, the Aluminium Packaging Recycling Organisation. The programme has reached more than seven million households nationwide since its launch in 2012. For more information about MetalMatters visit: www.metalmatters.org.uk. To find out more about recycling in Suffolk visit www.suffolkrecycling.org.uk.

Matthew Hicks - County Councillor for the Thredling Division

Tel : 01728 628176 Mob : 07824 474741 E-mail :

matthew.hicks@suffolk.gov.uk

CREETING ST MARY ANNUAL PARISH MEETING 25TH MAY 2022

Once a year organisations in the village present a report of their activities to the Parish Council. This year it was for real - in the Village Hall! As there are quite a few reports they will be featured in the newsletter over the next year: they are from:

The Chairman of the Parish Council – Cllr Sue Haynes - June/July issue

The District Councillor – Cllr Mike Norris / Cllr Steve Phillips - June/July issue

The County Councillor – Cllr Matthew Hicks -October/November issue

The Village Hall Management Committee – Chris Bingley - this issue

The Newsletter – Kathryn Martin / Joan Hardingham October/November issue

The Social Club – Kathryn Martin -October/November issue

The Primary School – Jenny Hitt

The Church - Glynis Clint - this issue

The Welfare Charities – Dave Primmer

The WI – Glynis Clint - this issue

The Blacksmiths Field – Jan Palmer

The Parochial Church Council – Glynis Clint

Reports for the Annual Parish Meeting May 2022

Creeting St Mary Church Report

We have continued to have two services a month in our church with the other two weeks in the month at Creeting St Peter. There are many other services in the Benefice each Sunday. The Zoom services continue as well. Our Christmas craft fair and tea afternoon, late 2021, led by Maree Connold was very successful and enjoyed by lots of people. Beautiful homemade Christmas gifts were on sale Our Easter service was a festal evensong, led by Henry Stanford with Ian Galbraith on the organ and the benefice choir. Sixty lilies were arranged by Caroline Barnes in memory of loved ones. The pedestal looked magnificent.

We were delighted to welcome the UEA to our Church in April, they were visiting two Churches in the area and came to us for morning coffee and a short talk on the history of our Church.

The SWT came to visit us in May to look at our beautiful church yard and help us to continue promoting wild flowers and habitats for animals living in and around the area. They were delighted to see how the different areas were managed. Our arrangement with Mr Ian Westgate is going very well. Ian manages the new church yard and spends four hours a month keeping it neat and tidy. Thank you to the Parish Council for their monetary input.

Other church yard work is done by volunteers over the year. We are extremely grateful to them for giving up their time.

Ian Galbraith has agreed to give us an organ recital in the near future.

We are hoping to have a tea afternoon in the Vestry on Wednesday 6 th July, 2–4pm. This will take the usual format with any profit being shared this year by Christian Aid and the Church.

Our Church supported, the Salvation Army, Family Refuge, Christian Aid and Stowmarket food bank.

We have 30 people on our electoral roll.

Here is a short account of life in St Mary's Church, Creeting St. Mary.

Glynis Clint.

Village Hall Management Committee Report

As we emerge from all the restrictions of the Pandemic I can report that our Village Hall appears to me to be in a good place. Our new heating system has been working well, and it can now be controlled remotely to fit the needs of various types of bookings. The new patio area has been much enjoyed, together with its new seating and colourful umbrellas. The lighting has also been improved, both for the car park and suitable lower lighting for the seating area. The new soundproofed door between the Hall and the lounge area has been an asset too. The Committee have been working towards further improvements, the main one being the refurbishment of all the toilets. Three estimates have been received and a choice of supplier and fitter has been made. We hope this work will go ahead during the summer.

Bookings have been coming back quite quickly. We now have regular bookings for four evenings a week. Daytime bookings too, and many parties of various kinds have been booked over the next few months. We look forward to the use of all our facilities over the forthcoming Jubilee celebrations, which will be provided without a charge. We are looking for villagers who would agree to be contacted to help with general jobs around hall maintenance and cleaning, and would also like to find some new Committee Members/Trustees who can add to our skills. Roots and Shoots have again provided us with flowers and compost for the planters at the front of the Hall, which are then looked after by the WI. With our solar panels working well, and our electricity contract in place until 2023, we hope to keep our hiring rates at a reasonable level to encourage use of the Hall. We hope the growing population in Creting will begin to enjoy the facilities we can offer in the years ahead.

Chris Bingley - Chair.

Womens' Institute Report

After a quiet time when we didn't meet because of Covid restrictions we returned to having meetings in the summer of 2021.

In the months of July and August, we met outside in the newly refurbished village hall garden and enjoyed meeting up again. We have two new members to WI and to the village.

From September we resumed our meetings in the hall.

Christmas lunch at The Angel in Needham Market. We had a very good meal and it was accessible to all our members.

The new year meetings, included a beetle drive and craft evening organised by Maree Connold.

We celebrated our 75 birthday party by having lunch at the White Horse, Stoke Ash, again a very enjoyable event.

We found the work of Dr Nicola Ebbs fascinating. Nicola lives in our village and divides her week between working on the East Anglian Air Ambulance and being a consultant in the A and E department of the Ipswich Hospital.

Our July garden meeting is going to be at the home of Janet Mayell, The Old Post Office in Creting. A lovely afternoon starting at 2 pm.

We have an open meeting in May, a talk on forensic science, we expect it to be very interesting, everyone welcome.

Each month members meet up for walks and patchwork.

To finish my report, we are hiring a bus in August, for our August meeting and having an afternoon in Beth Chatto's gardens.

This is a little insight into our WI in Creting St Mary.

Glynis Clint.

Ed.: We are all grateful to the host of volunteers that run these activities, providing a wonderful range of activities for the village.



**Stowmarket
Chorale**

Music Director
Benedict Collins Rice

**HAYDN
MISSA SANCTI NICOLAI**

**BACH
CHRISTMAS ORATORIO CANTATA III**

Saturday 3 December 2022

7.30 pm

Village Hall, Mill Lane, Woolpit, IP30 9QX

£17.50 per person, children/students free

Booking: 07972 668180
tickets@stowmarketchorale.org.uk
or on the door



Registered Charity 280488

www.stowmarketchorale.org.uk

**Advertise
here
1/4 page
for £48
per year**

REGISTERED OSTEOPATH Louise Mallender BSc (Hons) Ost Med

**Back & Neck Pain, Joint Problems,
Repetitive Strain, Minor Sports Injuries,
Lifestyle Coaching & Exercise Classes**

Station Yard, Needham Market, IP6 8AS

01449 678250 or 07789935190

**Email: info@louisemallenderosteopathy.co.uk
www.louisemallenderosteopathy.co.uk**



DR DAN POULTER MP

Member of Parliament for Central Suffolk and North Ipswich

Whilst I am pleased that we are now moving forward with our new Prime Minister, it has been more important than ever for me to focus on the issues which matter to us locally here in Suffolk.

Whilst I regularly visit farms and food producers across Central Suffolk and North Ipswich, I was delighted to recently welcome to Parliament a delegation of farmers and food producers from Fram Farmers. Following a tour of Parliament, I heard first-hand about the challenges facing Suffolk's farmers and food producers. Although it's fair to say that the discussions focused generally on agricultural policy and potential changes on the horizon, more detailed conversations were also had around the financial challenges affecting farmers and food producers, and indeed all businesses here in Suffolk, including the rising cost of fertiliser as a result of the ongoing conflict in Ukraine and costs of energy and fuel.

We are all proud of Suffolk's farmers who produce food to the highest standards. I have always believed in the importance of there being a fair and level playing field with farmers from other countries, especially in areas like animal welfare standards, food labelling and quality of grain entering the food chain. In all of these areas, our own farmers are world class. It is vital that our Government policies are fit for purpose and it's important to hear the impact that any changes will have on the ground for our local food producers. I will always do my very best to support Suffolk's farmers and food producers and I will continue to speak with Ministers to make sure that their voices are heard in Parliament. The effects of the ongoing Avian Influenza outbreak Suffolk are of significant concern and this is why I have been pressing Government Ministers to better support this important sector.

It is essential that the Government continue to consider the impact that these issues have on our farmers, food producers, retailers and ultimately the consumer. Agriculture, food and drink remain central to our local economy with more than one in seven jobs in Suffolk having some link to food production. We really are incredibly lucky to have such wonderful farmers and food producers on our doorstep and in the run up to Christmas, like you, I will be supporting them by buying local produce and gifts.

As always, if you have any issues which I can help with at one of my local advice bureaux, please don't hesitate to get in touch

**Tel: 0207219 7038 www.drdanielpoulter.com daniel.poulter.mp@parliament.uk
se of Commons, London, SW1A 0AA 020 7219 7038**

CHURCH SERVICES

for
The Benefice of North Bosmere

The Benefice of North Bosmere comprises Churches of Coddendam, Creeting St Mary, Creeting St Peter, Crowfield, Earl Stonham with Stonham Parva, Gosbeck, Hemingstone, Stonham Aspal with Mickfield.

All services are Benefice Services.

The details below are correct at the time of going to press and may be subject to change. Please keep an eye on notice sheets and magazines.

Online worship (via Zoom) takes place each Sunday at 09.30 am.

To join a Zoom service: email northbosmerebenefice@gmail.com at least 2 days before the service. Click on the link you receive.

Services - in person - December 2022 and January 2023

Sunday 4 December: No service at Creeting St Peter

Sunday 11 December: 11.00 am - Toy and Gift Service at Creeting St Mary

Toy and Gift Service, 5.00 pm - Christmas Lights switch on C'g St Peter

Sunday 18 December: 11.00 am - Holy Communion BCP at Creeting St Peter

6.30 pm - Carol Service at Creeting St Mary

Saturday 24 December: 6.30 pm - Carol Service at Creeting St Peter

Sunday 1 January 2023: 10.00 am - Holy Communion Creeting St Mary

Sunday 8 January: 11.00 am - Morning Prayer BCP at Creeting St Mary

Sunday 15 January: 11.00 am - Holy Communion BCP at Creeting St Peter

Sunday 22 January: 11.00 am - Holy Communion at Creeting St Mary

Sunday 29 January: 10.00 am - Benefice Holy Communion at Earl Stonham

4.00 pm - Candlemas Choral Evensong at Stonham Aspal

Priest-in-Charge North Bosmere Benefice

Rev'd Philip Payne, The Rectory, The Street, Stonham Aspal,

IP14 6AQ, 01449 711684 revphilippayne@btinternet.com

Suffolk Historic Churches Ride and Stride 2022

A huge "thank you" to Ben, Anthea and David who raised over £1300 in sponsorship by cycling across mid-Suffolk and visiting many of our lovely churches and chapels in early September.

St Mary's will receive 50% of the funding immediately. We, and other churches in the benefice have benefitted from much needed funding to keep our historic buildings in good condition. Thanks also to the many "sponsors", your support is appreciated and helps to maintain our lovely church for the future.



From the Rectory

Rev. Philip Payne

From Darkness to Light

At the beginning of November, Mary and I took our now customary autumn break in Tideswell, Derbyshire. One evening we drove along the A6, winding snake-like along the floor of the Wye Valley, in heavy rain. It was dark with much standing water on the road. Despite the volume of traffic, and the comforting cocoon of a modern car, it was easy to feel isolated. The warm glow of our accommodation was a welcome sight.

That morning we had visited an exhibition under the heading 'Re-Making Paradise', focussed on the all-too-familiar theme of our impact on the environment. One image stood out for me, The Great Flood. The biblical narrative appears in Genesis chapters 6-8, however it is not just a biblical tale, the story is deeply embedded in our psyche.



The background to The Flood is simple human selfishness, our unwillingness to listen to God. Instead of starting completely afresh, God started a conservation project. Amidst the destructive power of the flood, God worked through faithful humans to preserve and seed a fresh start. God sought restoration and, despite our failings, engaged us in his work.

The Flood is a one-off, something God promised not to repeat; yet the need for restoration continues, as is all too evident today. We continue to destroy the very substance of our being, our God given home, through greed, carelessness and indifference. The sheer scope of the problem is daunting; if not overwhelming. What can I do; so small a drop in so large an ocean? Where does Christmas come in? Christmas - behind all the glitter lies the birth of a child; the Son of God. In the story of Noah we see God engaging with us to rebuild a better world on the foundations of the old. At Christmas, in the birth of Jesus, we see God actually joining with us, becoming one of us, so that we (God and humankind) may work together. Where the flood brought destruction, the birth of Jesus, the Christ-child, brings restoration. In him was life; and the life was the light of mankind. And the light shone in darkness; and the darkness comprehended it not. (Jn 1:4-5). Humankind is still making a mess of things, and God still cares. May our acts of loving kindness shine, not just this Christmas, but in the year ahead.

Creting St. Mary Church News.

Our services are slightly different this month as we celebrate Christmas.

Toy and Gift service 11 th December at 11am. These gifts will go to the Family Refuge in Ipswich. Please leave your gifts unwrapped as they will be chosen for individual families.

Carol service.

On Sunday 18 th we will have our carol service starting at 6.30 pm. It will take the form of nine Christmas Carols and nine readings.

Christmas Day services.

On Christmas Day the services will be in Gosbeck, Hemingstone and Earl Stonham.

New Years Day, January 1st 2023.

This will be a benefice service in St Mary's Church, Creting St Mary.

Saturday 13 th May 2023 for an organ recital

We are very pleased to be able to welcome Mr Ian Galbraith to our Church. Please watch this space for more details nearer the time.

Maree's tea and craft sale.

This was a very successful afternoon enjoyed by lots of people. Thank you to Maree for helping to raise **money for our Vestry Fund.**

Suffolk Historic Churches Ride and Stride 2022 - see p16





CREETING ST MARY SOCIAL CLUB

Diamond Jubilee Hall

www.creeting-st-mary.suffolk.gov.uk/social-club/social-club-news/

open to residents of the village and surrounding area

MEMBERSHIP IS FREE! Forms are available from William

Barnes CSM_SocialClub@outlook.com or tel.: 07771 814651

Social Club Report

I write this the day after the fireworks event at the village hall. What an amazing evening and how lucky we were to have such good weather. I hope you all enjoyed it as much as I did. So many people give their hours freely in the planning, preparation, volunteering on the night and the clear up afterwards. It is a great example of everybody coming together to make sure that our neighbours, friends and families have an enjoyable and affordable evening. I am so grateful to everyone for giving up hours of time to make it successful and to everybody who came and made it so enjoyable.

We always want to hear from our members on how we can improve these events and make them even better so please let us know.

Our bar night on the 25th November will have a World Cup theme showing the England v USA game. It will be a lively evening and we always love to see new members and welcome new friends. Free to join and the benefits are numerous: member priced drinks, first notification of tickets for events and the ability to shape things. 17th December brings our Children's Xmas party (sold out) and on 23rd is our 80's night for all you new Romantics - some tickets remain - £5 a ticket with 2 free drinks, what a bargain!

We would love to hear from you if you have ideas for events, if you would like to volunteer or if you have any feedback on the social club committee events to help us go from strength to strength.

Lisa Nobes Chair, Creeting St Mary Social Club Committee



Kathryn Martin has retired after a long stint as Chair of the Social Club, We have her to thank for building the Social Club Committee up to the successful and productive group it has become, organising all the fantastic events the that the village community can enjoy.

Thank you Lisa for taking on this substantial role!

SOCIAL CLUB EVENTS

Creeping St. Mary Village hall

contact CSM_SocialClub@outlook.com or William Barnes 07771 814651

Wednesday 7 December – Soup lunch from midday

Saturday 17 December – Christmas Childrens' Party from 2 p.m. (fully booked)

Friday 23 December – 1980's fancy dress evening with live music

January and onwards events will be communicated by email to members and on our facebook page



**Another successful Bonfire night.
Thanks to the fireworks, catering
and car-parking teams!**





THE RECAL STOWMARKET

- ◆ 115,092 visitors in the first year since its re-development.
- ◆ Five star customer ratings consistently on Tripadvisor and Google Reviews.
- ◆ Customer feedback such as "top class", "wonderful" and a "fantastic experience".



The Regal Experience



The Regal has undergone a major redevelopment which was completed last year - costing £3.71 million.

It has had over 100,000 visitors in its first year and Manager, David Marsh says: "I never tire of the surprise and delight expressed by first time visitors at the quality of the venue. Screen 1 is one of the largest in East Anglia and all three of our auditoriums are equipped with the latest laser projectors. This provides an outstanding experience, and reminds you that there is simply nothing that compares with seeing a film on a big screen."



What's on offer?

The Regal has been designed to be used for a wide range of purposes. They include theatre performances, live music, comedy nights, cinema, live streaming of concerts, bar and café services, private parties, conferences, groups and societies, school visits, dementia friendly screenings, training sessions and business meetings.

As a community owned facility, prices are kept at an affordable significantly level lower than those charged by the chains who operate in cities and larger towns.

The Regal's Pocket Money Movies screenings on Saturday & Sunday mornings make a family trip to the cinema even more affordable to all. Children's tickets are just £3 and include free admission for one accompanying adult. These screenings feature family favourite films and take place on Saturday and Sunday mornings.

To find out what's on offer at the Regal follow us on social media or sign up to the Regal Weekly Newsletter via our website, which will be delivered straight to your inbox each week.

@theregalstowmarket

@theregalstow and @1936cafebar

@TheRegalStow

linkedin.com/company/TheRegal



The 1936 Cafe Bar

The 1936 Café Bar at the Regal is proving to be the ideal meeting place for a coffee with friends, a pre-film lunch or even an evening cocktail. You don't need to use the cinema as everybody is welcome to enjoy the spacious café area!

There is always a selection of cake and drinks available along with tasty offerings from the Breakfast, Brunch and All Day menus.

Come in and see what is on offer – we are sure that you will be impressed!



Opening Times:

Breakfast

Served until 12pm every day

Brunch

Served until 2:30pm every day

All Day Menu Available

10am - 9:30pm every day



Great offer for Creeping St Mary

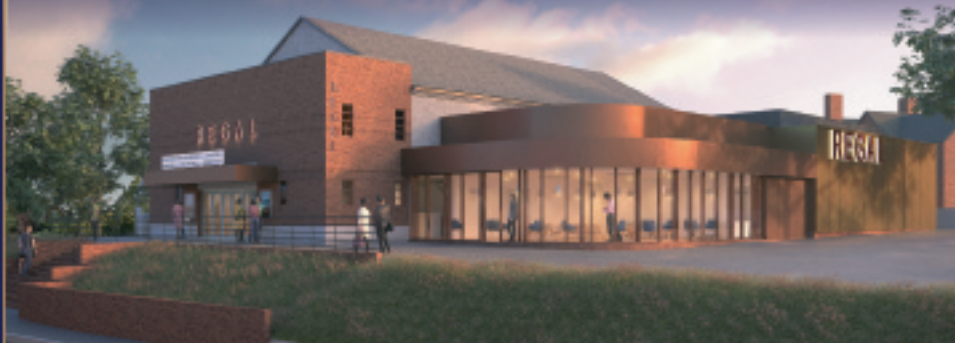
**25% off online cinema
ticket prices**

up to 31st December, 2022

Use this Voucher Code for the deal **Creeping**



The Regal Redevelopment



The redevelopment project has involved experts from up and down the country. They have helped to provide the experience and expertise required to create a high quality facility within the approved budget.

However three of the key roles on the team have been performed by businesses closer to home. The Project Managers have been Northmores of Cambridge who, amongst other projects, have overseen the master planning for the expansion of the Addenbrookes Hospital. The Architects have been Purcell based in Colchester who have overseen the restoration works at the Houses of Parliament and the main contractor has been local building company, Mixbrow based in Needham Market.

The redevelopment has managed to retain the character of the original 1936 building whilst adding the modern facilities that are expected by today's audiences. With extensions to both sides the Regal now has three auditoria, a new front of house space, plush new seating, a new café and bar area, better staging and changing facilities and enhanced sound and audio equipment.

The opportunity has also been taken to improve the surrounding area including resurfacing the Ipswich Street Public Car Park immediately next to the Regal.

Manager David Marsh says: "The fact that the venue is so much easier to get to than other entertainment venues has proven to be very appealing. The transport links into the town are really good and rarely congested and there are nearly 200 parking spaces within 200 yards of our main entrance."

CREETING ST. MARY WELFARE CHARITIES.

Charity number: 207445

The Creeting Saint Mary Welfare Charities Trust can provide assistance for those in financial need by reason of, age, illness or unemployment or for education. Possible grants are: annual grants to those with a state pension; for the relief of general hardship; for students in higher or further education, towards maternity costs and funeral expenses and pendant alarms for the elderly. The Trust is intended to benefit the residents of Creeting Saint Mary, however, exceptionally, applications from outside the Parish will be considered.

TRUSTEES:

Mr. P Stephenson (Chair) 01449 722868 Mr. D. Primmer (Hon. Clerk); Mrs. M. Aldred 01449 20568; Mrs. P. Day 01449 720057; Mrs. K. Martin 01449 720491.

STUDENT GRANTS FOR ELIGIBLE RESIDENTS OF CREETING SAINT MARY

If you are 18 and plan to continue in Further or Higher education you can apply for a grant. These not loans and so no repayment is entailed, nor are they means tested. You may have a grant each year of your course. When applying please provide information on the type of course and the College or University.

GRANTS FOR RESIDENTS IN RECEIPT OF STATE PENSION

Residents of Creeting Saint Mary, with the state pension, in financial need can apply for a monetary grant once a year, payable at the end of the year. Previous recipients will need to apply again.

All applications for grants are treated in the strictest confidence.

Please make enquires to the Clerk of the Trustees

Mr. D. Primmer, 30 All Saints Road, IP6 8NF Telephone 01449 721514

Indigo opportunities

Providing activities for adults with additional needs

Creeting St Mary Village Hall

49 All Saints Rd
Creeting St Mary
Ipswich
IP6 8NF

Arts & Crafts
Drama
Music & Movement
Sports & Games
Discos & Singing
Nature & Gardening
Woodwork
Social interaction
Cooking

Fridays
9.30am
till
2.30pm

Costs
£40 daily
refreshments
included

www.indigo-opportunities.org.uk
tel.07766177255
info@indigo-opportunities.org.uk

Indigo news

The Indigo group which meets in the CSM hall on Fridays hosted a tea party in aid of Children in need on Friday 18th November. Generous suppliers of assorted cakes and tea and coffee were served by the participants and we were made very welcome to sit and chat together and to buy tickets for a raffle.

Another social afternoon is planned for Friday 2nd December when similar refreshments will be served and entertainment by a local Elvis Presley provided from 1-2.30pm. All will be made most welcome.

Kathryn Martin, Indigo guest.

The Diamond Jubilee Village Hall

The Hall is to hire:

Features: a large hall, (capacity 100), bar and a smaller lounge and meeting room (with WIFI) which can all be hired separately; plus a well equipped kitchen, ample tables and chairs, toilet facilities, an outside patio, large car park and access to Blacksmith's Field.

Bookings: Mrs Jennie King tel 07849 817488 creetingjubileehall@gmail.com

Trustees and Helpers needed

We often need help with 'odd jobs' in the Hall, and would be glad if anybody could put their name forward for any future work to enhance our facility. In particular there will be some painting work - a few volunteers would soon get the job done! Do let me know if you are happy to be approached.

Chris Bingley (Chair, Village Hall Mangement Committee)

Tel 01449 720324. christine.bingley@gmail.com

Defibrillator Demonstration

On Friday October 30th we were pleased to welcome Mike, James and Hella along to show us how easy it is to use this wonderful machine, and how it will talk a user through the simple procedure needed.

Over 30 villagers attended, many questions were answered and a few had a go at CPR on a dummy.

James Mullett is an air ambulance Critical Care Paramedic. Mike Vorndran and Hella Crosby are volunteer First Responders, and when there is a cardiac emergency, one of them will usually be the first to attend . We are extremely lucky to have this team living close by in our community, and it was good to learn just what they are able to do, for us and surrounding villages.

However, they can only cover about 75% of calls. Could you consider learning to do this?

When someone calls 999 for a cardiac emergency, they will be given the code for their nearest defibrillator box, so do immediately ask someone to fetch it and you may save someone's life before other help arrives.

(The day I wrote this, Mike told me the Needham Market area sent them an exceptional 5 call outs in 24 hours!)

Defibrillators are at the phone box at Jack's Green and at the Village Hall.

Chris Bingley. christine.bingley@gmail.com

CREETING ST. MARY VOLUNTARY-AIDED CHURCH SCHOOL



A fantastic start to our year with so many things going on, in and outside of our school community.

We have been very busy with our learning this term.

Our youngest class, Ash, have settled in well and along with their phonics and numberwork, they have been looking at Autumn and learning about themselves. We

had some friends over from Barking Pre School for a teddy bear's picnic which was a really fun morning.

Our Year 1 and 2 class, Oak, have been improving steadily in their writing, phonics and reading, as well as literacy and maths. They have made some brilliant fire engines too, working really carefully with saws!

Chestnut class are our Year 3 & 4 class and have been learning about animals, humans and food in science and appraising ABBA songs in music.

Our oldest class, Birch, have been writing instructions and studying 'Goodnight Mr Tom' and started looking at their new topic, World War 2.

22 of our Year 5 and 6 pupils went on a 4 night residential to Herefordshire in October with lots of fun activities like: high wires, pizza making, early morning rounders and crate stacking. A really fantastic trip for them all.

Sport. We have children compete in the Gipping Valley Cross Country competition, and a very successful Girls Football Tournament, clearly inspired by the Lionesses win in the summer! This term we have a mixed football competition as well as continuing with our P.E Enrichment days in school.

We donated over 130 items to the Stowmarket Foodbank in October, which is such a generous donation from everyone.

We also had a wonderful church service led by Reverend Payne.

On Saturday December 3rd we have our first in person Christmas Fayre for 3 years! Our planning is already well under way and we are so excited to get everyone together. All are welcome and it would be lovely to see so many people. If you want to contribute to any of our stalls, please contact the school office.

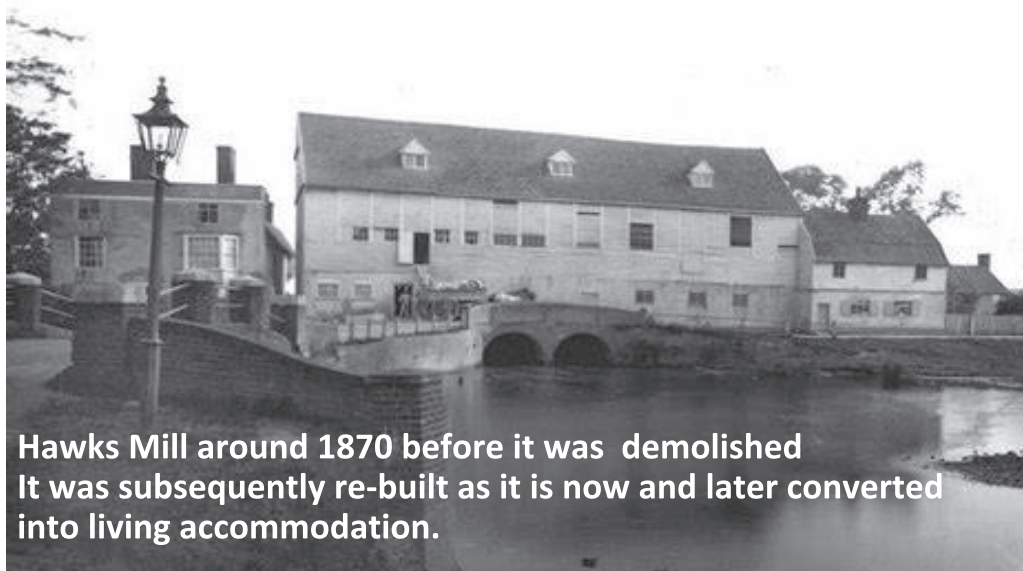
Head Mrs. Christine Friar
school telephone 01449 720312
office@creetingstmary.suffolk.sch.uk
www.creetingstmary.suffolk.sch.uk

Autumn Term 5 Sept - 16 Dec
Half-term - 24 - 31 October
Spring Term 5 Jan—7 Apr
Half Term 21 Feb—25 Feb

Footpaths and Bridleways

All of the Parish's footpaths and bridleways are reasonably clear to walk at the moment – but if you find one that's not, let me know and I'll contact the Council or landowner if necessary. At the time of writing, many paths are muddy and slushy owing to the amount of rain we've had but they can still be traversed without too much trouble – except one! Which one is that then? This is the part of the River Gipping path which continues from Raven's Bridge to Baylham Mill, FP3. My last attempt to walk by the river on FP3 was about a couple of weeks or so ago but I gave up after 300-400 yards due to heavy overgrowth either side of the path. It made walking quite unpleasant with constantly having to bash down the weeds etc. with my trusty "bashing stick"! I have asked Suffolk County Council (SCC) as to why it's not trimmed back more often but the answer from them referred to scheduled times of cutting. SCC has the responsibility to ensure that all paths are safe to walk along – and that surely includes when the paths may require undergrowth cutting by heavy machinery, schedules or not?. I'll continue to complain – if you can do that too it could quite well add more pressure on SCC to keep their "flagship" Ipswich to Stowmarket river path open.

Paul Scully Nov/Dec 2022 paul@impressions41.plus.com 01449 721462



**Hawks Mill around 1870 before it was demolished
It was subsequently re-built as it is now and later converted
into living accommodation.**



A BIT OF HISTORY

In my "A Bit of History" contribution in the last Parish Newsletter, I wrote about Hawk's Mill road bridge crossing the river in Hawks Mill Street and which was replaced using the original 1793 brick abutments, 100 years ago, in 1922. Its replacement was as a result of a review of the whole length of the proposed Ipswich to Stowmarket canal in 1783. At that time, it was proposed that there would be 18 canal bridges and by about 1793, the engineer who had been appointed for the project was John Rennie. The condition of all 18 bridges was reviewed and as a result they were either modified or rebuilt as appropriate.

Near to the Hawks Mill Street bridge, stood the original mill. was part of the manor of Creting endowed by Henry V1 to Eton College in 1441. The lease in 1542, referred to it as the "High Mill" to differentiate it from the lower mill at Bosmere which was also owned by Eton College. The current mill was built on the same site and completed in 1884, subsequently producing a variety of products such as flour, paper and during the 2nd World War when it was owned by Reckitts Colman, mustard. It was in use as a mill until the early 1980s when it was converted for residential use.

There is a great deal of interesting information regarding the River Gipping and the part it played over the centuries serving the local area. It proved essential in being utilised to transport all manner of materials and goods from Ipswich to Needham Market, Stowmarket and all villages in between. Many of the original features of the canal can still be seen as you walk along the old river path, although alas, time has taken its toll on most of them.

If you are interested in the history of the River Gipping and the part it played over the centuries in developing the county as we now know it, I strongly recommend that you read the book "The Ipswich to Stowmarket Navigation - John Rennie's First Canal Project". This publication is available from the River Gipping Trust if you're interested in buying a copy. Send an e-mail to secretary@rivergippingtrust.org.uk who will advise you on costs etc. As well as a jolly interesting read, it contains many old photographs and pictures of features along the River Gipping in days gone by.

Paul Scully Nov/Dec 2022 paul@impressions41.plus.com 01449 721462

Would you like to be Local Recorder for CREETING ST MARY?

The Suffolk Local History Council runs a Recorders Scheme throughout Suffolk; with volunteers we ensure that the 'present' is recorded at local level for the 'future'. They would note significant events and collect the parish magazines, leaflets, election pamphlets and newspaper cuttings and submit these to the Suffolk Records Office. No qualifications are needed, just an interest in your parish. There is a Newsletter and an annual conference. See www.slhc.org.uk and contact recorders@slhc.org.uk



Suffolk Libraries'

MOBILE LIBRARY

Route 13 at Creting St. Mary

On Friday every four weeks at Whissel's

Farm at 11.20-11.30 and outside 30 All

Saints Road at 11.35- 45

10 June, 8 July, 5 August, 2 September, 30
September, 28 October, 25 November,
23 December. 2023: 20 January



www.suffolklibraries.co.uk/visit/mobile-libraries/ipswich-mobile-library-route-13
You can renew titles on line at Suffolk libraries

NEEDHAM MARKET AND DISTRICT HORTICULTURAL SOCIETY

Members have enjoyed hearing Ruth Goudy, Kiln Farm Nursery and Darren Lerigo, Modern Mint, talk about how gardening can increase well being and help the environment. 22 members visited Stowmarket Golf Club for our annual supper with good food and a challenging quiz.

We are now on a winter break until our first speaker and AGM in February
Details of the full programme can be found at nmdhs.onesuffolk.net

Membership is annual at £5. Meetings are generally once a month in the Needham Market Community Centre, IP6 8BB on the first Thursday at 7.30pm with occasional outings to see gardens and an annual supper in October. If you are interested in joining the Society in 2023 email: sec.hortsoc@gmail.com for a membership form or come to a meeting.

Hazel Mackintosh. Acting Chairman 01449 72075

PROGRAMME 2023

FEBRUARY 2nd - Activ Gardens, Suzanne Robirosa followed by brief AGM

MARCH 2nd - Birds, Bees and Insects in the Garden, Genevieve Broad

APRIL 13th - Perennial Mr Potter, Bryan Thurlow

MAY 4th - Climate Change, Jim Paine

JUNE 1st - Asian Plants, Helen Chen

JULY 6th - Bonsai, David Fryer

AUGUST - **No meeting**

SEPTEMBER 7 th - Wild Flowers and orchids, Roger Hance

OCTOBER 5th - Wasps, Hawk Honey

NOVEMBER 2nd - TBC, Ruth Goudy

Needham Market Library

The old Middle School music room in School Street, Needham Market IP6 8BB has been converted to include activity and bookable meeting rooms.

Closed Dec 24th, 25th 26th and Jan 1st & 2nd

open Saturday 31st : 10.00 - 13.00 & 14.00 - 16.00

Normally - Monday Closed

Tuesday 1000 – 1300, 1400 - 1700

Wednesday 14.00 - 19.00

Thursday : 10.00 - 13.00 and 14.00 - 17.00

Friday : 14.00 - 17.00

Sunday 1100 - 1600

Out-of-hours book return box available
- (not for large books though!)

Manager: Donna Grand, 01449 720780

help@suffolklibraries.co.uk

They have many regular events from IT training to play groups for young and old!

www.suffolklibraries.co.uk/visit/locations-and-times/needham-market-library



Creeping St. Mary Women's Institute

Unfortunately, our October meeting had a last minute adjustment, due to our speaker receiving an injury. She will be joining us for a meeting in 2023. Nevertheless, a pleasant evening was enjoyed in good company.



On November 9th we held our AGM. Glynis Clint agreed to remain as our President for a second year. Thanks were given to Sue Groom and Pat Goodrum who are standing down from their respective roles of Treasurer and Secretary, over many years. At this meeting we also had a presentation by Ron Clint on the perils of the internet, scams and how to stay safe and avoid them. This was of considerable interest, and will hopefully give us protection from the dangers that lurk online. Many questions were answered on this important topic.

December: Christmas meal booked for members.

Christmas Wreath-making and floral decorations; Monday December 12th, Village Hall at 2.00pm open to anyone; Get set for the Christmas season! Please bring along all you will need: base or container, ties, greenery, candles et.; help and instruction will be available. If you need a wreath base, please let me know by the beginning of December. Refreshments will be served and there is a small charge of £5. **Contact Glynis Clint 01449 720740**

We look forward to another year of enjoyable meetings on the second Wednesday of each month at 7.30 in the Needham Market Community Centre. Do come along for a friendly welcome if you would like to join us.

Our first January meeting will be on Jan 11th with a speaker on Recycling.

Normal meeting time 7.30pm Members welcome from nearby villages too.

Chris Bingley 01449 720324 christine.bingley@gmail.com



P.B.S. Plumbing & Bathroom Services

A Reliable & Friendly Local Service.

Bathrooms, showers, kitchens & radiators.

All household plumbing needs.

Maintenance, new installations
& power flushing of heating systems.

- * FREE ESTIMATES
- * ALL JOBS CONSIDERED
- * AVAILABLE EVENINGS
- * AVAILABLE WEEKENDS

Tel: 07870 989 422

Mob: 01449 720095



NEEDHAM MARKET COMMUNITY CHINWAG

A monthly social group for the over
60's in Needham Market &
surrounding areas.

FIRST WEDNESDAY OF EVERY MONTH.

Needham Market Community Centre
School Street
Needham Market, IP6 8BB
2pm - 4pm

FREE Entry - donations welcome

Find us on:

Tel: 07944 488799

Email: needhammarketchinwag@gmail.com



Needham Market
Community Chinwag



@nmchinwag



**One of the bonuses of the Lilley's Wood work party sessions -
a well earned break scoffing William's delicious apple cake!**

CREETING NATURE NOTES

helping nature to help us

LILLEY'S WOOD

As many of you will know, Lilley's Wood is an area of a couple of acres north of the River Gipping and adjacent to the sewage works on the west side. This land is managed by Creeting St Mary Parish Council for wildlife. We have had three working parties this autumn, clearing over-grown vegetation to open up areas to enable a range of rare plants to flourish on this impoverished soil. This will encourage a range of insects while the areas of scrub will be good for birds, small mammals and insects.

The working parties are generally made up of between 6 and 10 local volunteers who are able to combine hard work with a good chat and, at the break, consume some excellent home-made cakes. Do go and have a look at the Wood if you are interested and have half an hour of spare time.

We hope to have further working parties (subject to weather) on 10th and 16th December from around 1pm until dusk. The work we do over the winter will enable us to see the results for plants and insects next spring!!

Later events will be communicated by email to members and on our facebook page. If you would like to volunteer email me at wbarnes@barnesgroup.co.uk or call me on 07771 814651.

William Barnes

Suffolk Tree Warden Network

Vacancy: Volunteer Tree Warden for Creeting St Mary

Have you been enjoying the wonderful autumn colours this year?

Well. Suffolk has an extensive networks of volunteer tree wardens and a dedicated website: www.suffolktreewardens.org.uk.

Tree wardens champion trees and hedgerows the countryside, towns and cities - an immediate way to help tackle and mitigate climate change and loss of biodiversity. As a County, we have only 8% of our land with tree cover compared with London's 20%; our trees and hedgerows form a valued part of our landscape and important 'corridors' for wildlife.

STWN runs and supports Community Tree Nurseries and offers tree hedgerow packs free if charge. 30,000 trees have been planted in the last 4 years, several in Creeting St Mary.

With the support of The Tree Council training is provided and events such as pruning workshops and fungi identification walks are organised. For personal reasons I am unable to continue as the Village's Tree Warden. If you are interested please see the website and get in touch with either the Co-ordinator or myself. The role could be shared by a family couple or team.

Hazel Mackintosh 01449 720753

The Mustard Pot Veterinary Surgery

For a professional caring service



Tel: 01449 722 198

Coddenham Road, Needham Market, IP6 8NU

A member of Stowe Veterinary Group
www.stovevets.co.uk

Stowmarket Wildlife Group Suffolk Wildlife Trust



The Village Hall, Stowupland, IP14 4BQ Admission £3.00.

THERE ARE NO MEETINGS TILL APRIL 2023

Wednesday 26 April, 7.30pm – ADDERS AT MINSMERE With Steve Everett Adders are the UK's only venomous snake and receive plenty of hysterical publicity in the press, despite the fact that many people have never even seen one. Yet they are fascinating creatures and deserve our understanding and respect rather than fear. In this illustrated talk we will look at the lives of the Adders at RSPB Minsmere, one of the best places to see them in Suffolk.

Arrangements may change. Please check the Suffolk Wildlife Trust website at www.suffolkwildlifetrust.org/events for updated information.

We are volunteers who care about wildlife, its beauty, diversity and importance to everyone. We support the Trust's aims and vision for a Living Landscape - with nature reserves, Sites of Special Scientific Interest and County Wildlife Sites forming networks of linked-up habitat.

We look after local wildlife reserves: Work parties maintain Combs Wood at Stowmarket and Bonny Woods at Barking.

Local SWT reserves Bonny Wood, Combs Wood, Bradfield Woods Bulls Wood. Mickfield Meadow, Black Bourn Valley,

SWT Magazine is delivered to local members, saving postage costs.

Contact :John Thompson - 01449 676471 - swtstowmarket@gmail.com

**Advertise with a
1/2 page
for £75
per year**

HIGH FLYERS

EQUESTRIAN & COUNTRY CLOTHING



ARIAT®



dubarry®
of Ireland

△ Schöffel

FAIRFAX & FAVOR
ENGLAND



AIGLE

MUSTO®
PERFORMANCE



*We also stock a selection of
Horse Feed/Bedding/Supplements,
Dog Food, Bird/Chicken Feed*

HIGHFIELDS FARM, BATTISFORD,
STOWMARKET, SUFFOLK IP14 2HL

TEL: 01449 722122
WWW.HIGHFLYERSCLOTHING.CO.UK

HIGH FLYERS

SELF-STORAGE

20' X 8' X 8' CONTAINERS

(1,172 CU.FT)

AVAILABLE FOR RENT

HIGHFIELDS FARM, BATTISFORD,
STOWMARKET, SUFFOLK IP14 2HL

TEL: 01449 722122

WWW.HIGHFLYERSCLOTHING.CO.UK

TREVOR HUGHES WINES

**350 wines from
around the World.**

**Free delivery on
orders over £35.**

**For promotions and
wine list**

Telephone 01842 814414
contact@trevorhugheswines.com

Trevor Hughes has lived in Creting St
Mary for over 25 years and his
company is based in Brandon, Suffolk



SUFFOLK

GARDENING THYME

Mowing, Planting, Pruning, Training,
Hedges, Tidying, Feeding

07736 348 545 | @suffolkgardeningthyme
suffolkgardeningthyme@gmail.com

Sudoku - fiendish

Each group and row of 9 contains only one of the numbers 1 - 9.

Answers p 37

		8				2		
		5			7			8
	7			6		4		
		6		2			1	7
4	2			1		6		
		7		8			9	
5			4			2		
	3					1		

WINTER WORD SCRAMBLE

UDOMO SDTYB
 RWES UMRMIPA
 METPRSCU
 SAGEM
 GSSWJAI
 TPIEASR
 ELUDELWMNI
 RYLROEHSILB E
 GUSBNRHI RDY
 ARTEECMH ISSRT
 DNSOWSOPR
 MOTISEETL
 RIFOBNSNE
 RSKENOC
 ORT RISFYMGONNS
 HEANBBR RSACE
 ROTUSKYNLWA C
 ICTSMRHAE TSASSF



STONHAM ASPAL
PRE-SCHOOL

Where learning is FUN

For Children aged 2-5 years

We offer a nurturing, happy and fun environment where children learn through play. Our purpose-built premises have a secure outdoor area, with a big sandpit, slide, playhouse and a mud kitchen for messy play.

We work in close partnership with parents to plan individually for each child, maintaining detailed notes and photographs which we use to identify how to support each child in meeting their full potential, enabling them to flourish and thrive.

Please contact us for more information
 Call: **01449 711593**
 Email: stonham-aspal@btconnect.com
www.stonhamaspalpreschool.org.uk

Ofsted Good School 2019

THE STREET • STONHAM ASPAL • IP14 6AF

Contact us to
book a visit



Mac Marney

Refrigeration & Heat Pump Air Conditioning

est 1964

Local, family-run service for all your
domestic and commercial
air conditioning & refrigeration needs

contact Glen@macmarney.co.uk
for your free quotation



**Advertise with a
1/2 page
for £75
per year**

Last year I fell for a scam when I was doing my Christmas shopping. The scam was clever. I thought I was getting a good deal but didn't realise I was being scammed until it was too late. How can I avoid the same thing happening again this year?

Scammers' tactics become more sophisticated every year, making scams tricky to recognise, but there are things you can look out for.

If it seems too good to be true, it probably is. For example, tickets to an event that are much cheaper than they're being sold elsewhere, or a holiday that's a lot less than you'd expect to pay.

Be wary of people contacting you out of the blue on social media sites or via text and email offering an item for sale or deal on something.

Do your research. If you're buying from a website you haven't used before, spend a few minutes researching it. A good place to start is finding a website's terms and conditions. You should also look up the company's address, this can normally be found in the website's 'contact us' section and should have a street name, not just a PO box. If it's a registered UK company you can check its details on the Companies House website at gov.uk/get-information-about-a-company

Check to see what people have said about the company. It's worth looking at different review websites to see other people's feedback – don't rely on reviews the company has put on its own website.

Scammers will often ask you to pay in an unusual way, or very quickly. For example, you're asked to send money through a transfer service like MoneyGram or Western Union or pay via vouchers.

Remember never give away your personal information like a password or PIN and never click on or download anything you don't trust.

To hear about scams in Suffolk, you can sign up to the very useful Trading Standards email at suffolk.gov.uk/community-and-safety/suffolk-trading-standards/become-a-consumer-champion

If you've mistakenly transferred money, speak to your bank and the police.

Contact the police if the scammer is in your area or you feel unsafe.

Don't feel embarrassed about reporting a scam – scammers are clever and it can happen to anyone. Reporting a scam helps track down and stop scammers, helping to prevent it from happening to others too.

Citizens Advice Mid Suffolk can provide advice on this and other issues, including debt, employment, benefits and family law. Contact us on 01449 676060 or use the contact form at midsuffolkcab.org.uk/contact-us, or arrange a visit on Tuesdays and thursdays in Stowmarket: our opening hours can be found at midsuffolkcab.org.uk/contact-us .

STOWE VETS

Canine Christmas hazards

As any vet can tell you, it is not uncommon for dogs to eat something they're not supposed to. Accidents can happen when food is kept where a dog can scavenge it, and this is easily done, particularly over festive occasions such as Christmas when food is more commonly left out. While you would never knowingly feed something dangerous to your pet, accidents can happen, so it's important to be vigilant and be aware of how this can occur.

Toxic and dangerous foods to be aware of:

Alcohol, blue cheese, bread dough, chocolate, cooked bones, macadamia nuts, mouldy foods, onions, garlic, leeks, shallots and chives, raisins, grapes, currants and sultanas, sweets and sugar, xylitol.

Poison prevention

Christmas cake features dried fruits, like raisins and sultanas, which are toxic to dogs. Other seasonal snacks that feature these ingredients are mince pies, fruit cakes, bread and butter puddings and panettones. In the run-up to Christmas, a lot of people will be baking with dried fruits, and in the whirlwind of preparation, these ingredients and bakes can be left in a place that dogs can access. Something as innocuous as moving the Christmas cake to a lower surface to make room on the table has the possibility to end badly.

Chocolate

Another food item that's particularly common over Christmas is chocolate, lots of people hang chocolate decorations on their Christmas tree, or give it as a gift. If you choose to hang chocolate decorations on your tree, it is worth keeping the tree in a room your dog cannot access, or hang the decorations out of reach.

Scavenging

Other common scenarios that vets see include dogs getting to food in the kitchen whilst everyone else is eating in the dining room, or scavenging through the rubbish to get to cooked bones, which are brittle and can splinter easily and cause blockages or damage their intestinal or stomach wall.

My pet ate something toxic, what should I do?

If your dog ingests something poisonous to them, move them away from the source of poison, and contact your veterinary practice immediately. While your local vet may not be holding routine appointments on Christmas Day, all veterinary practices are legally required to provide an out-of-hours service and will be available in an emergency. Your vet will be able to advise you on what to do, depending on what your dog has eaten, how much of it they have had, and what symptoms they are experiencing.

For more information contact:

Stowe Veterinary Group on 01449 613130.



For Sale

Copies of this wonderful photo taken by Dr Nicola Ebbs from the East Anglian Air Ambulance are available for sale with the proceeds going to the East Anglian Air Ambulance.

Prices:

A4 format £25 framed (plain black) - £20 unframed

A5 format: £15 framed - £10 unframed.

£5 from each sale will be donated to the air ambulance.

To order copies please contact: Steve Fernie at Creeting House (opposite the church)

steve@creetinghouse.com or phone 01449 720988

SUDOKU SOLUTION

6	4	8	9	3	5	7	2	1
1	9	5	2	4	7	3	6	8
3	7	2	8	6	1	4	5	9
8	5	6	3	2	4	9	1	7
7	1	3	6	5	9	8	4	2
4	2	9	7	1	8	6	3	5
2	6	7	1	8	3	5	9	4
5	8	1	4	9	6	2	7	3
9	3	4	5	7	2	1	8	6

Winter Word Scramble

Answers

muddy boots	snowdrops
warm jumpers	mistletoe
crumpets	bonfires
games	conkers
jigsaws	frosty mornings
parties	bare branches
mulled wine	country walks
holly berries	Christmas feasts
hungry birds	
christmas trees	

GENERAL INFORMATION AND CONTACTS

Creeting St Mary Newsletter:

Editors:

Content: Joan Hardingham, Alder Carr Farm,
creetingnewsletter@gmail.com

Liaison with contributors and advertisers: Kathryn
Martin, creetingnewsletter@gmail.com

Advertising: Jennie Blackburn 01449 721369
clerk@csmmpc.co.uk

(Advertising rates are on the next page)

Distribution: David Haynes 01449 722570

Newsletter deadlines: the 15th of the month of:

September (Oct-Nov edition i.e. early December and Christmas events)

November (Dec-Jan edition)

January (Feb-Mar edition)

March (Apr-May i.e. Easter)

May (Jun-Jul i.e. all those mid-summer events)

July (Aug-Sep - the summer holiday events)



Creting St Mary Parish Councillors

Sue Haynes (Chair) - 01449 722570 (Village Hall Management Committee)

Hugo Craggs (Vice-Chair) - 07815137228 (Community Infrastructure Levy (CiL)
/Sustainability)

Jan Palmer - 01449 723997 (Blacksmiths Field / Play Equipment)

Paul Scully - 01449 721461 (Footpaths and Bridleways)

Roger Coton - 01449 721526 (Suffolk Association of Local Councils (SALC))

Nigel Smart - 01449 720100

Lesley Plummer - 01449 720359

Caroline Gordon - new appointment

Dan Cage - new appointment

To contact any of the Parish Councillors, please contact the Parish Clerk first

Parish Council Clerk : Jennie Blackburn - 01449 721369

or email: clerk@csmmpc.co.uk

Meeting agendas and dates are placed on the village noticeboards during the week prior to the meetings, and also on the website.

Creting St Mary Website

www.creating-st-mary.suffolk.gov.uk

Contact the Parish Clerk Jennie Blackburn at clerk@csmmpc.co.uk

The 3 village notice boards are located at:

the Village Hall, St Mary's Gardens and Jack's Green.

The old phone box at Jack's Green contains maps, information and a defibrillator and the notice board at the entrance to Alder Carr Farm has a foot path map.

Diamond Jubilee Village Hall

Chris Bingley (Village Hall Management Committee Chair) 01449 720324.

christine.bingley@gmail.com

To hire all or part of the hall : contact Mrs Jennie King Tel 07849 817488

Creeting St Mary Social Club: csm_socialclub@outlook.com.

Lisa Nobes (Chair), William Barnes, Secretary 0777814651

Creeting St Mary Neighbourhood Watch Representatives:

Bill Mackintosh: 01449 720753 Sue Haynes: 01449 722570

Creeting St Mary Footpaths

Paul Scully 01449 721461 e-mail: paul@impressions41.plus.com

Creeting St Mary Welfare Charities

Mr. D. Primmer, 30 All Saints Road, Creeting Saint Mary, IP6 8NF 01449 721514

County Councillor for the Thredling Division: Matthew Hicks

Tel: (01728) 628176 ; matthew.hicks@suffolk.gov.uk ; Twitter: @HicksCllr

Mid Suffolk and Babergh District Councillors:

Mike Norris - mike_norris@hotmail.co.uk 01449 720871

Steve Phillips - steve.179@icloud.com 01449 721710, mob. 07794823323

MSBDC Mid Suffolk Baburgh District Council- 03001234000

Member of Parliament for Central Suffolk and North Ipswich

Dan Poulter Tel: (01728) 726588 ; daniel.poulter.mp@parliament.uk

Twitter: @drdanpoulter

Creeting St, Mary Primary School - Head Mrs. Christine Friar

School telephone 01449 720312, office@creetingstmary.suffolk.sch.uk

www.creatingstmary.suffolk.sch.uk

Priest-in-Charge North Bosmere Benefice

Rev'd Philip Payne, The Rectory, The Street, Stonham Aspal, IP14 6AQ

01449 711684 revphilippayne@btinternet.com

Parochial Church Council

PCC Secretary: Hazel Minter - 01449 722148

Treasurer: David Haynes - 01449 722570

Defibrillators

Diamond Jubilee Village Hall IP6 8NF and Phone box at Jack's Green IP6 8NA

Lilley's Wood Work Parties monthly meetings

contact William Barnes 07771 814651. wbarnes@barnesgroup.co.uk

CSM Newsletter Advertising Costs

Bi-monthly issues (June/July; Aug/Sept;

Oct/Nov; Dec/Jan; Feb/Mar; Apr/May)

Deadline 15th of month previous.

One insertion (depending on space)

Full page - £20

1/2 page - £15

1/4 page - £10

Series of 6 adverts:

Full page - £108.00 (inside)

£125.00 (back cover)

1/2 page - £75.00

1/4 page - £48.00

An editorial piece about your business (approx 100 words) can be put in annually.

Dick Whittington



Stonham Theatre Guild presents

Dick Whittington
by Warren McWilliams
By arrangement with Lazy Bee Scripts

Earl Stonham Village Hall

Friday 2 December - 7pm
Saturday 3 December 2pm & 6.30pm

Adults £7.00 - Children £5.00

Box office : boxofficestg@gmail.com or 01449 711461

Printed by Gipping Press Ltd. Tel: 01449 721599 Web: www.gippingpress.co.uk

